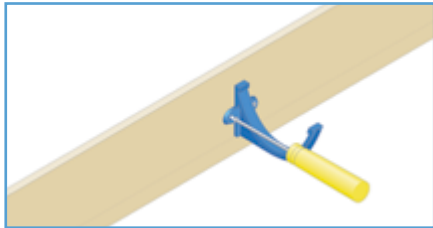
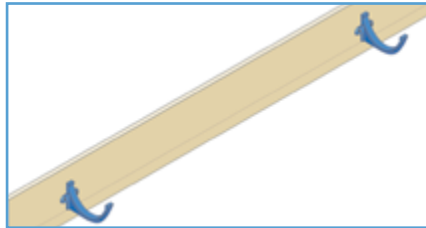


Cast aluminium rainwater system

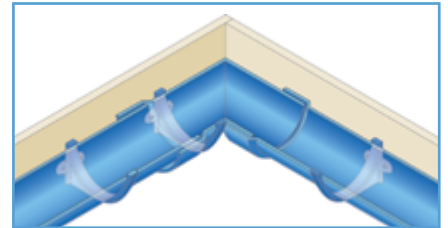
Rainclear's cast aluminium rainwater system emulates the original features of traditional cast iron making it an ideal choice for sympathetic restoration and new build projects where traditional character is required.



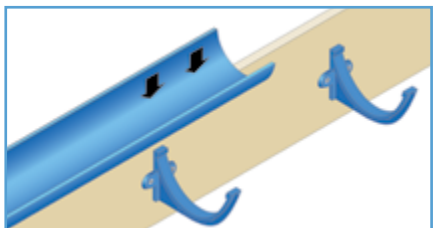
1. Set out the required gutter position and outlets to fall. Fixing method will vary dependant on site detailing. Fascia brackets are commonly used, alternative brackets are also available e.g. rise & fall and rafter brackets.



2. Position brackets at 915mm centres allowing additional brackets on outlets and angles (see Fig.3). Fix fascia brackets using 6mm x 40mm (No12 x 1.5") roundhead woodscrew.



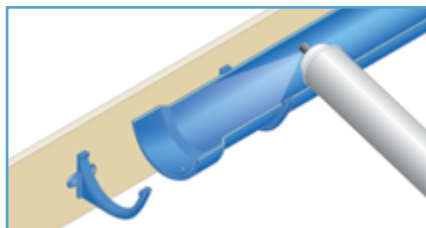
3. Plumb line outlets with gullies at ground level. Position angles, allowing an additional bracket adjacent to the joint with gutter length.



4. Lower the gutter onto the brackets ensuring sufficient clearance for the gutter joint. Position gutter into bracket.

Note: Half round and beaded half round profiles will clip into position, this is best done by locating the back of the gutter into the bracket whilst simultaneously pivoting the gutter into position and applying gentle pressure on the front edge.

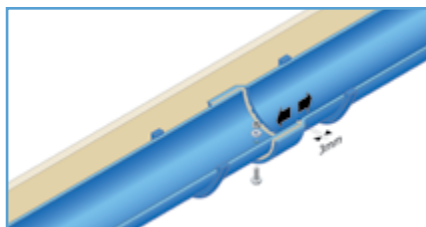
Note: For ogee and moulded profiles installed on a fascia bracket it is important to additionally secure the gutter to the fascia using a minimum of 1no screw per length fixed through the hole provided in the back of the gutter.



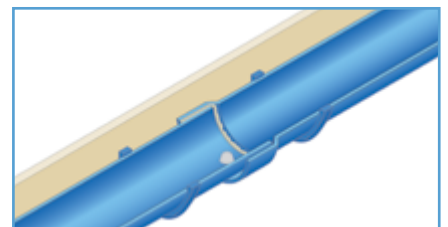
5. Cast gutters overlap at the joint with a spigot and socket. Degrease the jointing surfaces using Rainclear solvent cleaner (Product Code: SOLCLEN).



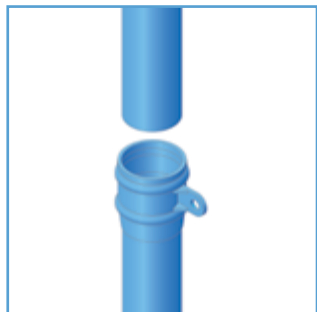
6. Apply two 6mm beads of low modulus silicone sealant either side of, and around the fixing hole. Rainclear recommends the use of DOW791 (Product Code: 791BLACK).



7. Insert the spigot end of the gutter allowing a 3mm expansion gap. Secure joint using aluminium M6 x 20mm nut, bolt and washer provided.



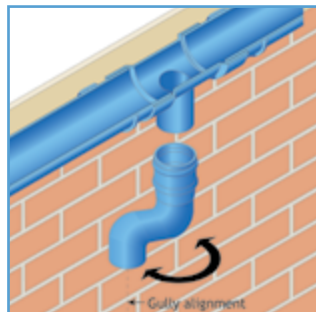
8. Finally, cone-off the exposed bolt stud and nut inside the gutter with a generous application of silicone. Tool off excess silicone around the joint and from external surfaces.



1. Heritage style pipes have a traditional cast socket joint available either with or without ears.

Pipe sockets are supplied loose for assembly on-site. They join simply by interference fit. To fix socket to pipe, offer up the socket to the pipe end and hammer home, ensuring a block of wood is used to protect the socket and coating.

Note: The socket should be fixed onto the pipe prior to commencing installation.

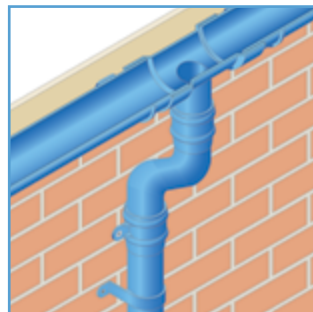


2. Align the pipework with gully at ground level. An offset is commonly used to connect the gutter outlet to the pipe.

Where square or rectangular pipes are being installed and offsets are required, alignment between the gutter outlet and gully must be exact.

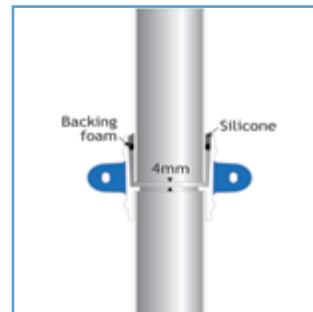
Round pipe systems are more flexible to install and offsets can be adjusted and "swung" into alignment with the drainage position.

A range of adjustable 'two-part' offsets are also available for flexibility on-site and ease of installation.



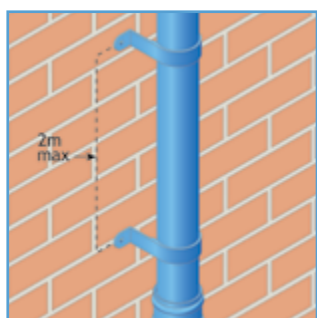
3. Commence installation from the gutter outlet by fitting and adjusting the one part or two-part offsets.

Check vertical plumbline positioning and seal spigot and socket joints using backing foam (Product code: BFOAM) and DOW791 silicone sealant (Product Code: 791BLACK).



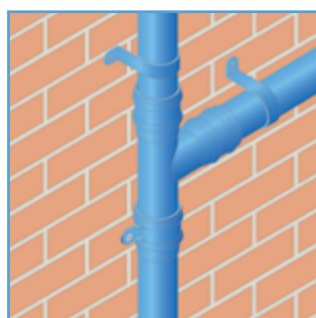
4. Allow a 4mm expansion gap between pipe end and socket, and insert a 6mm backing foam into the pipe joint. Seal with DOW791 silicone sealant.

Fix to wall at 2m centres using No.12 x 50mm screws (Product Code: SCREW20). Eared sockets have elongated fixing holes to permit adjustability.

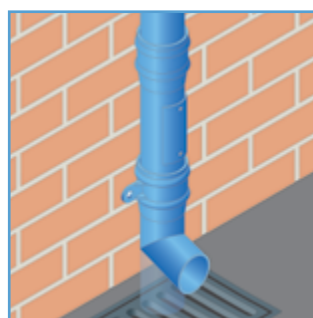


5. Where unearled pipe work is used it must be secured at maximum 2m centres.

Pipe clips should be chosen according to visual or practical considerations and comprise standard base, small base and extended base options.

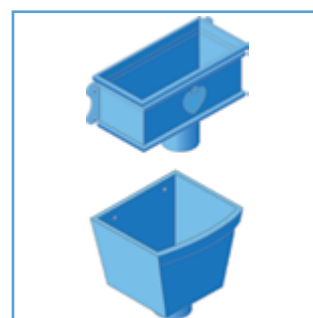


6. Bends and branches are secured into the pipe socket. Additional pipe clips should be used to support pipe work at junctions and changes in direction.



7. At ground level, rainwater pipes can terminate with a shoe for free discharge over a gully or be directly connected into the drainage system.

In the case of direct connections it is recommended that an access pipe fitting is included within 750mm of ground level.



8. Rainwater heads (hoppers) are a common feature on many buildings. Rainclear offer a comprehensive range of designs to meet all types of building architecture. Rainwater heads are directly fixed to the wall via fixing holes provided.

Rainclear are able to assist with bespoke detailing.