

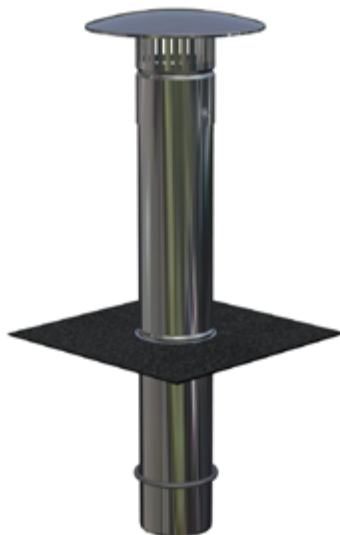
ProVent internal vent

Applications

- Rainwater outlets for flat roof refurbishment and new build projects

Features

- High quality 400mm long spigot manufactured from stainless steel
- Factory bonded flange to match specific membrane material being used (material must be specified at time of order)
- Membrane attached to the outlet allows for easy installation
- Flush finish - minimal risk of ponding
- O-ring seal supplied for refurbishment application - provides excellent seal whilst still allowing for movement



Code	Outlet Drain (mm)	To suit pipe size (mm) Where outlet is inserted into existing pipe in refurbishment situations	O-ring seal diameter (mm)	Membrane attachment		Price £
				Type	Size (mm)	
PROIMV75	75	82-97	8/12	Bituminous	500 x 500	£212.35
PROIMV110	110	120-128	10	Bituminous	500 x 500	£234.41
PROIMV160	160	170-178	10	Bituminous	500 x 500	£320.73



Unit 34A
Techno Trading Estate
Ganton Way
Swindon
Wilts

SN2 8ES
T: 0800 644 44 26
F: 01793 52 24 71
E: sales@rainclear.co.uk
W: www.rainclear.co.uk



PRODRAIN Drainage Range



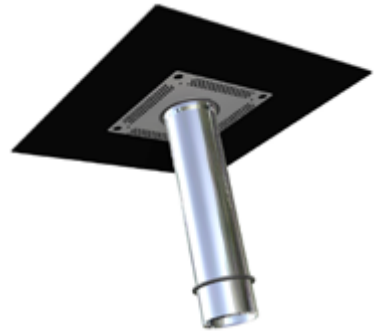
ProDrain rainwater outlets

Applications

- Rainwater outlets for flat roof refurbishment and new build projects

Features

- High quality 400mm long spigot manufactured from stainless steel
- Factory bonded flange to match specific membrane material being used (material must be specified at time of order)
- Membrane attached to the outlet allows for easy installation
- Flush finish - minimal risk of ponding
- O-ring seal supplied for refurbishment application - provides excellent seal whilst still allowing for movement



Code	Outlet Drain (mm)	To suit pipe size (mm) Where outlet is inserted into existing pipe in refurbishment situations	O-ring seal diameter (mm)	Membrane attachment		Price £
				Type	Size(mm)	
PROD40	40	45-50	5	Bituminous	500 x 500	114.25
PROD50	50	58-64	8	Bituminous	500 x 500	114.25
PROD62	62	70-76	8	Bituminous	500 x 500	115.94
PROD70	70	75-78	5/UF-3	Bituminous	500 x 500	115.94
PROD75	75	82-97	8/12	Bituminous	500 x 500	115.94
PROD90	90	98-108	10	Bituminous	500 x 500	116.85
PROD95	95	102-109	8/UF-4	Bituminous	500 x 500	118.50
PROD110	110	120-128	10	Bituminous	500 x 500	118.50
PROD125	125	135-143	10	Bituminous	500 x 500	136.00
PROD145	145	150-153	5/UF-6	Bituminous	500 x 500	154.63
PROD160	160	170-178	10	Bituminous	500 x 500	154.63

The prices shown within this guide are subject to quantity & value discounts but exclude VAT which will be added at the standard rate and our standard terms and conditions apply, copies available upon request. Rainclear Systems reserves the right to amend prices and imagery without prior notice.

ProVent external vent

Applications

- For the weatherproofing of soil vent pipes on new build applications

Features

- A weatherproofing solution to seal the vent pipe to the roof system
- Factory bonded flange to match specific membrane material being used (material must be specified at time of order)
- These twin skin stainless steel covers provide long lasting protection concealing unsightly pipes
- The internal pipe sits within the vent pipe with an 'O' ring seal that provides an effective seal against condensation
- Adjustable cover suits pipes up to 600mm high supplied with stainless steel weather cowl to protect it against rainwater and airbourne debris



Code	To suit vent pipe	Diameter of internal pipe (mm)	Diameter of outer pipe (mm)	O-ring seal diameter (mm)	Membrane attachment	Price £
PROV75	3"	58	95	10	Bituminous	231.31
PROV110	4"	87	125	8	Bituminous	263.45
PROV160	6"	145	182	5	Bituminous	311.88
PROV250	4"	87	250	8	Bituminous	428.16

Diameter of outerskin is greater to allow for knuckles and roof level obstructions

The prices shown within this guide are subject to quantity & value discounts but exclude VAT which will be added at the standard rate and our standard terms and conditions apply, copies available upon request. Rainclear Systems reserves the right to amend prices and imagery without prior notice.

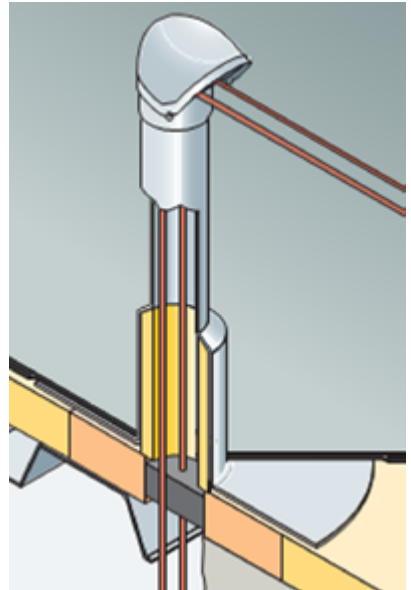
THE ROOF - NEK

Based on the same principle as the PP-3, the Roof-Nek not only provides cable access for contractors but actually facilitates the design process by allowing the division of responsibility.

Features

The Roof-Nek is made for waterproof durability encompassing an easy access design which includes:

- Spun aluminium base.
- Large area to bond waterproofing.
- Detachable access lid.
- Future proof – height sufficient for future waterproofing without decommissioning.
- Pipe/cable port plate with knock-out holes.



Code	Dimensions	Price £
ROOFNEK18	Roof Nek II Pipe/cable access	90.53

In order to advise on product selection information such as:

Size and quantity of services required

- Pipe diameter including insulation thickness, cable bending radius, cable tray/ladder size.

Roofing construction

- Deck type, insulation thickness, type of insulation, the waterproofing membrane type and both insulation and waterproofing manufacturer's details.



IMPORTANT

Approval of the waterproofing detail for Roof-Pro 'guaranteed roofing systems' is to be sought from the membrane manufacturer.

ProGuard drain grill

Applications

- For Use with ProDrain rainwater outlets, to prevent debris blocking the outlet



Code	To suit pipe size (mm)	Guard size (mm)	Price £
PRODG210	50-160	210 x 210	52.50
PRODG325	160-250	325 x 325	124.19

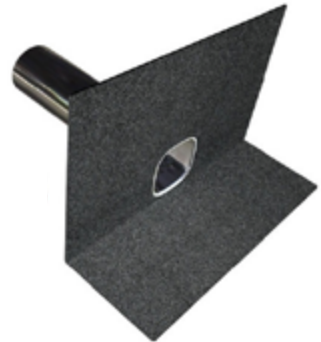
Directions of use:

- Stainless steel universal guard is solid and effective and securely clamps to the inside of the outlet stem. It is also tamper proof, as it can only be removed with the correct tool

ProDrain parapet rainwater outlets

Applications

- Rainwater outlets for flat roof refurbishment and new build projects



Features

- High quality 400mm long spigot manufactured from durable plastic/polypropylene
- Factory bonded flange to match specific membrane material being used (material must be specified at time of order)
- Membrane attached to the outlet allows for easy installation
- Flush finish - minimal risk of ponding
- O-ring seal supplied for refurbishment application - provides excellent seal whilst still allowing for movement

Code	Spigot Size OD (mm)	Membrane Type	Membrane Size (mm)	Spigot Length (mm)	Price £
PRODP50	50	Bituminous	500 x 500	400	153.54
PRODP75	75	Bituminous	500 x 500	400	155.38
PRODP110	110	Bituminous	500 x 500	400	169.20

The prices shown within this guide are subject to quantity & value discounts but exclude VAT which will be added at the standard rate and our standard terms and conditions apply, copies available upon request. Rainclear Systems reserves the right to amend prices and imagery without prior notice.

DRAINAGE SOLUTIONS YOU CAN TRUST

ProDrain parapet plus stainless steel rainwater outlets

Applications

- Rainwater outlets specifically designed for use in through-wall applications or parapets

Features

- High quality 600mm long spigot manufactured from stainless steel
- Factory bonded flange to match specific membrane material being used (material must be specified at time of order)
- Membrane attached to the outlet allows for easy installation
- Suitable for use in new build or refurbishment applications



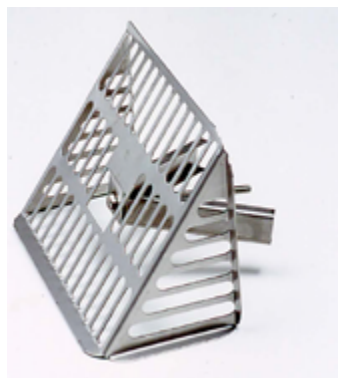
Code	Membrane Type	Membrane Size (mm)	Flow Rates	Price £
PRODP200	SBS	500 x 500	2.02	380.75

ProGuard parapet drain grill

Applications

- For use with ProDrain Parapet rainwater outlets, to prevent debris blocking the outlet

Code	To suit pipe size (mm)	Guard size (mm)	Price £
PRODPG	50-110	225 x 100 x 140	70.69

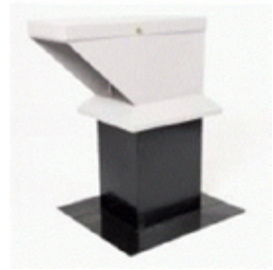
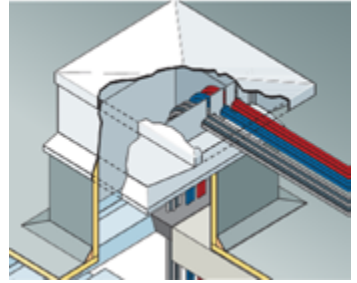


The prices shown within this guide are subject to quantity & value discounts but exclude VAT which will be added at the standard rate and our standard terms and conditions apply, copies available upon request. Rainclear Systems reserves the right to amend prices and imagery without prior notice.

DRAINAGE SOLUTIONS YOU CAN TRUST

PP3

The PP3 provides a weather-proof, service access riser to run roof-mounted cables, pipes and small ducts into a building. It is a three-part detail available in three standard sizes, and bespoke sizes on request. The PP3 offers increased assurances that the services access points can effectively be made water tight and insulated. Once installed, the riser is immediately water-tight and the following M&E trades can fully access the riser by temporarily removing the lid. The vapour seal and Building Regulations Part L requirements should be made at deck level



Features

- Powder coated zintec/ aluminium finish for durability.
- Pre-primed base section for quick installation into the waterproofing membrane.
- Cover flashing deep enough to permit vertical insulation.
- Removable access lid gives clear working access for M&E contractors.
- Aluminium pull-out panel cut without risk of corrosion to services profile for added weather protection.
- Future proof: Upstand height sufficient for future waterproofing without decommissioning.
- Cowl projects over opening for weather protection.

The models are based on aperture opening dimensions.

Code	Dimensions	Suitable for	Price £
PP31875C	180mm high x 755mm wide	a large number of refrigeration lines, cable trays/ladders, or up to 4/no 50mm diameter medium	645.66
PP32020C	300mm high x 400mm wide	a number of refrigeration lines double stacked, cable trays/ladders, or up to 2/no 175mm diameter medium F & R pipes (including insulation and waterproofing)	485.91
PP33040C	200mm high x 200mm wide	a number of refrigeration lines, cable trays/ladders, or up to 4/no 80mm maximum diameter small pipes (including insulation and waterproofing). Mechanically fix the base unit to the deck.	525.84

The prices shown within this guide are subject to quantity & value discounts but exclude VAT which will be added at the standard rate and our standard terms and conditions apply, copies available upon request. Rainclear Systems reserves the right to amend prices and imagery without prior notice.